

Case Study

NEXTDC Data Centre, NSW

Access Stairs and Elevated Walkways Taking Care Of Business

Project

NEXTDC S3 - Artarmon Data Centre

Installer

Karabiner Access

Products

KOMBI Access Stairs and Elevated Walkways

Situation

The NEXTDEC S3 Sydney is located in Artarmon, less than 10km from Sydney's CBD. S3 Sydney will deliver more than 20,000m² of IT space to organisations, as well as highly secure, native access to the leading public and private cloud platforms.

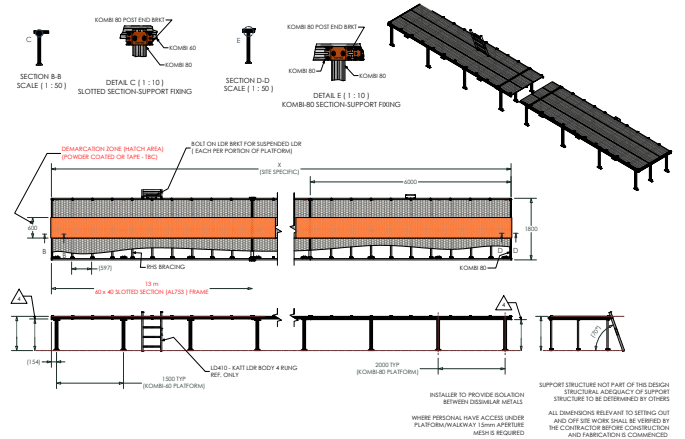
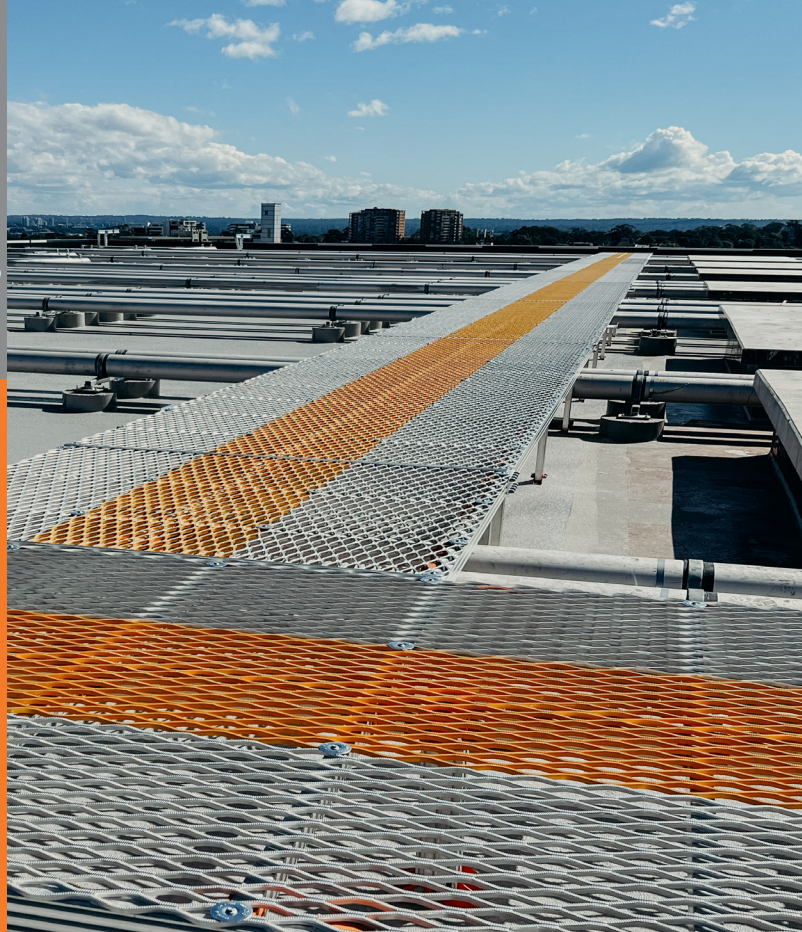
With the responsibility of delivering such dynamic and integral services to multitudes of businesses, the need for ensuring the safety and security of the infrastructure was essential. Providing designated access to equipment was required to enable personnel to perform their work confidently and without hindrance.

Solution

SAYFA Group partnered with Karabiner Access to manufacture and install the customised access and height safety systems required for this building, with an approximate spend of \$200K.

Roofs of data centres are considered high maintenance due to the servicing required of the mechanical equipment which ensures the temperatures are adequately controlled for the inside of the building. To facilitate this, there is a large amount of pipework, electrical cabling and other assorted systems which make the areas difficult to navigate around. Assisting with access to these areas, part of the project included the provision of KOMBI Elevated Walkways and Stairs which were made to a custom width.

The KOMBI Walkway Systems were designed by SAYFA's inhouse team, working alongside our installer, and taking into account the intricate infrastructure. Getting in on the ground level and designing and installing the systems in the new build ensured that all structural requirements could be met and adjusted if required during the project.



KOMBI
MODULAR ACCESS

SMARTER - EASIER - FASTER