



Case Study

Australian Pharmaceutical Industries, NSW

Access Stairs, Platforms Walkways, Crossovers

The ultimate logistics solution

Project

Australian Pharmaceutical Industries (API), NSW

Installer

Knapp Australia

Products

KOMBI Elevated Walkways, Stairs, Crossovers, Conveyor Access Platforms

Situation

Australian Pharmaceutical Industries (API), the parent company of Priceline, Soul Pattinson, and Pharmacist Advice, set up a new distribution centre in Marsden Park, Sydney as a 32,506sqm facility. KNAPP Australia were engaged to design, build and install a large, automated racking and conveyor system.

The new facility housed extensive conveyor systems that required permanent access for operators to move around freely and conduct required maintenance. There was a lot of other infrastructure and structural steel surrounding the complex layout and design of the conveyor systems, and a conveyor system on the mezzanine also required an access solution for around the systems installed.

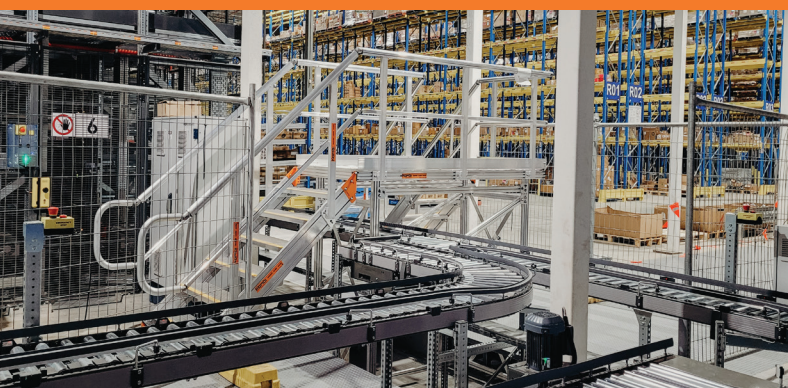
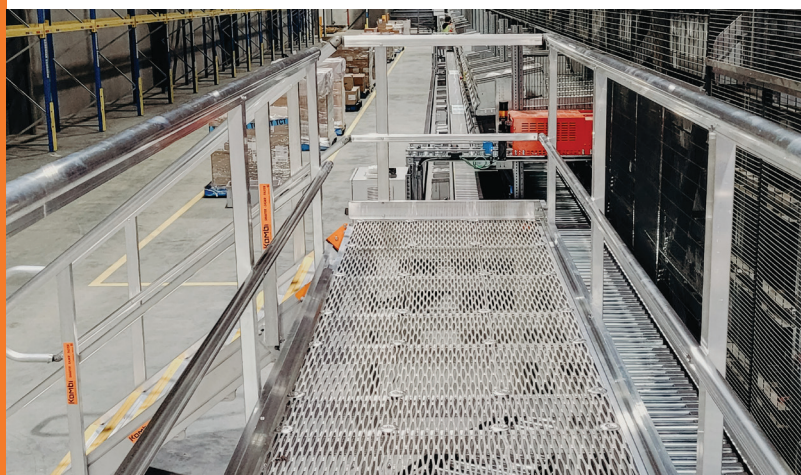
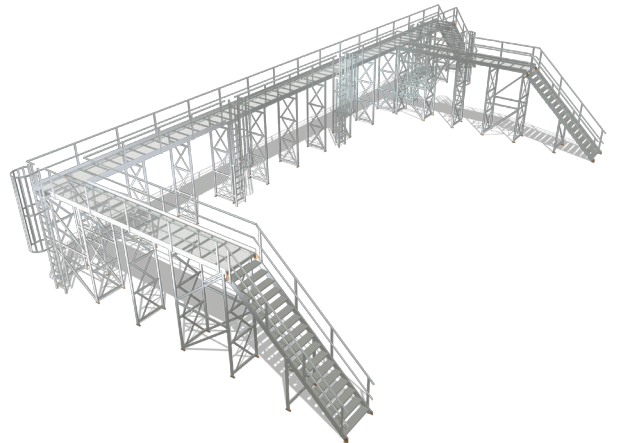
Solution

KOMBI's lightweight, modular, and simple design allowed access up to, over and around the existing structures. The KOMBI Builda made the initial design a smooth and easy process, allowing the engineers to build their own access solutions in real time.

After the initial concept design, utilising the KOMBI Builda, and several meetings between SAYFA and KNAPP to get the design finalised, it was decided to use KOMBI Elevated Walkways and Stairs and Conveyor Access Platforms to help their access needs.

They found the modular design of KOMBI was a lifesaver as there were a lot of changes required and last-minute adjustments. Plus being lightweight, it simplified the installation process dramatically. If using a steel system, it would've been very difficult and time-consuming to install.

It was then very quickly bolted together, saving both time and money.



KOMBI
MODULAR ACCESS

SMARTER - EASIER - FASTER