



Case Study

Metro Trains Melbourne Caulfield Station

Metro Train Line

Easy access to railway equipment

Project

Caulfield Railway Station, Caulfield East, VIC

Installer

Level Crossing Removal Authority (LXRA)

Products

KOMBI Access Platform Systems

Situation

The Level Crossing Removal Project is a government initiative commissioned to remove 75 level crossings in Melbourne.

The LXRA consortium required a platform to access a signalling monitor at the Caulfield Railway Station.

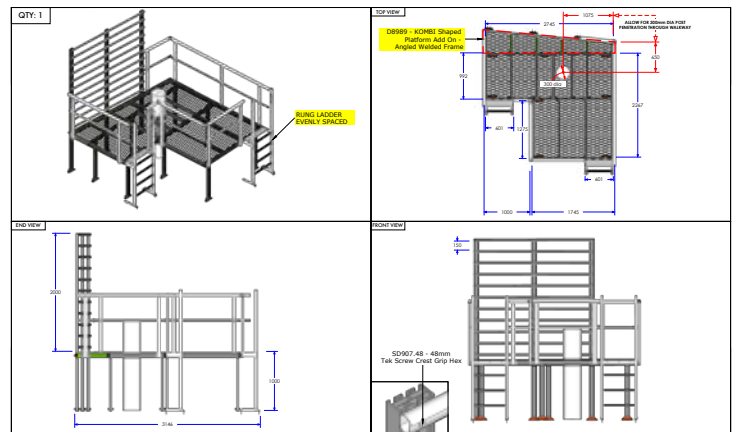
Solution

Having used the KOMBI modular system on other parts of the Level Crossing Removal Program, SAYFA was LXRA's first port of call and the KOMBI system the product of choice.

For the initial part of this project, SAYFA attended site to gather specific location information and to provide technical advice. The SAYFA team then designed a custom built KOMBI access platform that would fit seamlessly around the monitor.

After fabrication, KOMBI systems were supplied in kit form direct to the location. With no requirement for specialist skills, tools or permits KOMBI was easily assembled and adjusted on-site by LXRA personnel.

The platform now provides railway personnel maintenance free, safe and easy access to equipment.



KOMBI
MODULAR ACCESS

SMARTER - EASIER - FASTER